

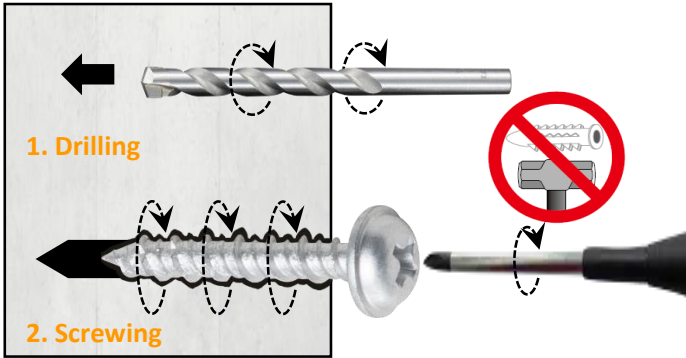
# Non-Plug Screw

No Plug! Easy Work!

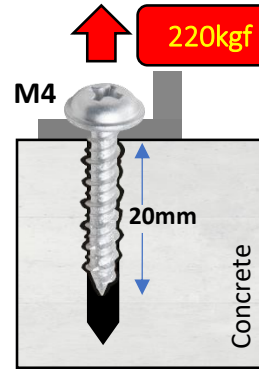
High Holding Power!



## 1 Easy Work!

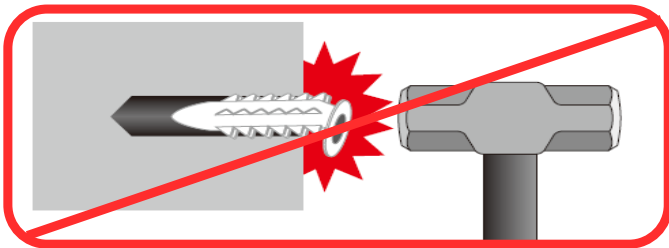


## 2 High Holding Power!

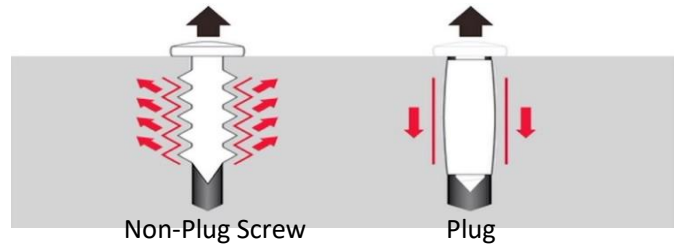


| Max Tensile Strength            |        |
|---------------------------------|--------|
| M4 x L25 (Embedment depth 20mm) |        |
| Concrete<br>FC=21N/mm2          | 220kgf |
| Block                           | 130kgf |
| Brick                           | 110kgf |

For installation, consider the safety ratio of 1/5 to 1/10



No worried to breaking the plug



5 - 10 times higher strength than Plug

## 3 Small Hole! Less Dust!

- Good for renovation working

## 4 Silver Coating!

- High performance Anti-rust

Rust-proof Silver coating



## Use Example



Twin Lamp



Emergency Light



Camera



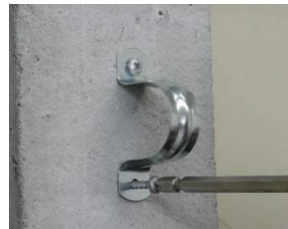
Speaker



PVC Box



Lightning



Saddle band



Hook